

PATENT SPECIFICATION



Application Date: June 15, 1943. No. 9528/43.

565.163

Complete Specification Left: June 13, 1944.

Complete Specification Accepted: Oct. 30, 1944.

PROVISIONAL SPECIFICATION

Automatic Wind Guard Petrol Lighter

I, HUBERT CHARLES GRIFFIN, 39, Ripley Gardens, Mortlake, London, S.W.14, British, do hereby declare the nature of this invention to be as follows:—

Important features of my invention are the fixing of the flint wheel integral with the cover and operating therewith either with or without the air of a spring, the telescoping of the well of the body to the top close to the anchor plate and so providing for easy adjustment of the wick and flint. I provide two hexagonal body tubes of equal width and thickness but of different lengths, the short one for the top has a liner fixed to its bottom and the liner projects below the body to receive the lower body tube. For appearance a narrow band covers the join of the tubes. The bottom body tube has a snap on bottom fixed to it.

Over the top of the liner an anchor plate is secured and in this is fixed the burner, a tube for the flint and its compression spring and a tube with a compression spring and plunger free to move up and down.

A snap on cover is pivoted through a bracket on its inside to the body a short distance from the outside so that the rear end of the cover may be used as a lever to open it, the body is cut away to allow for finger operation.

The flint wheel is locked to the cover by a screwed portion of the pivot pin the two ends being free to revolve in the bearings in the body. A vertical pin is fixed to the cover slightly out of line with the plunger, the bottom end of the pin being shaped to lock the cover when closed but pressure on the lever will release it when the spring plunger pressing on the end of the pin will partially revolve the cover and flint wheel. Holes are provided in the body around the burner for the supply of air.

Alternately the cover may be pivoted through a bracket mounted on the base plate and a telescopic wind guard tube to receive the bottom body tubes.

Dated this 14th day of June, 1943.

H. C. GRIFFIN.

COMPLETE SPECIFICATION

Automatic Wind Guard Petrol Lighter

I, HUBERT CHARLES GRIFFIN, 39, Ripley Gardens, Mortlake, London, S.W.14, British, do hereby declare the nature of this invention and in what manner the same is to be performed, to be particularly described and ascertained in and by the following statement:—

Important features of my invention are the fixing of the striker wheel integral with the cover and operating therewith either with or without the aid of a spring, the telescoping of the wall of the body to the top close to the anchor plate and so providing for the easy adjustment of the wick and flint, the provision of a cam integral with the cover operated by a push rod controlled by the well known reliable compression type of spring and the locking of the striker wheel to the cover by

the only pivot pin used in the complete assembly.

With reference to the accompanying drawings:—

Fig. 1 is a side elevation of the complete assembly shewing the cover closed and locked by the cam and push rod.

Fig. 2 is an inside plan of the top cover.

Fig. 3 is a side elevation of Fig. 2.

Fig. 4 is a side elevation of the top of the body.

Fig. 5 is an outside plan of Fig. 4.

Fig. 6 is a side elevation of the bottom of the body.

I provide two hexagonal body tubes of equal width and thickness but of different lengths, the short one A, Fig. 4 and 5, for the top has a liner B fixed to the bottom end to receive the lower body C Fig. 6.

[Price 1/-]

A narrow band D covers the join of the tubes. Over the top of the liner an anchor plate E Fig 4 and 5 is fixed and in this is fixed the burner F, a tube H for the  
 5 flint and its compression spring and the tube G with a compression spring and push rod G1 free to move up and down.

The snap on cover I Fig 2 and 3 has the block J integral with it, at K the  
 10 block is slotted to receive the striker wheel which is locked to the block by a screwed portion of a shouldered pivot pin the two ends being free to rotate in the bushes L  
 15 Fig. 4. A cam M Fig. 1, 2 and 3 is secured to the block preferably slightly out of line with its operating push rod. The end of the cam is formed to an angle or radius so that the pressure of the spring controlled push rod G1 Fig. 1 and 4 will  
 20 lock the cover when closed but a flick on the cover will release it and the continued action of the push rod against the cam will partially rotate the cover and with it the striker wheel.

25 The tube F1 fixed to the block covers the burner when the cover is closed.

The pivot ends of the cover and body are formed to provide for finger operation.

Holes are provided in the top of the  
 30 body Fig. 1 around the burner for the supply of air but are not shewn in Fig. 4. Alternatively the cover may be pivoted through a bracket mounted on the base plate and a removable telescopic

storm guard to receive the bottom body. 95

Having now particularly described and ascertained the nature of my said invention and in what manner the same is to be performed, I declare that what I claim is:—

40 1. A lighter the cover of which with the striker wheel are mounted on the same pivot pin to partially rotate therewith, the ends of the pin being supported in the wall of the main body, a cam on the  
 45 cover with its face formed to an angle or radius, a spring controlled push rod working freely in a tube anchored to the main body and pressing against the angle of the cam to lock the cover in the closed position until a flick on the cover moves the  
 50 cam angle past the centre of the push rod when its released pressure partially rotates the cover and with it the striker wheel. 55

2. A lighter as claimed in claim 1 the cover of which with the striker wheel are rigidly mounted on the same pivot pin, the ends of the pivot pin being free in the wall of the main body. 60

3. A lighter as claimed in claims 1 and 2 with the well of the lower main body detachable immediately under the anchorage of the burner substantially as described. 65

Dated this 10th day of June, 1944.

H. C. GRIFFIN.

[This Drawing is a reproduction of the Original on a reduced scale.]

Fig 1

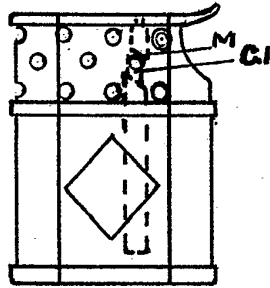


Fig 2

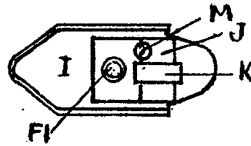


Fig 3

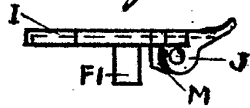


Fig 4

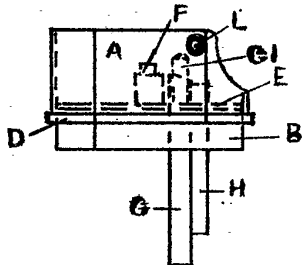


Fig 5

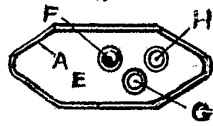


Fig 6

