

128,886

PATENT



SPECIFICATION

Application Date, Mar. 29, 1919. No. 7968/19.

Complete Accepted, July 3, 1919.

COMPLETE SPECIFICATION.

Improvements in Pocket Lighters.

I, HENRY JUSTUS ECK, of 10, Priory Road, Bedford Park, London, W. 4, Engineer, do hereby declare the nature of this invention and in what manner the same is to be performed, to be particularly described and ascertained in and by the following statement:—

- 5 This invention relates to pocket lighters or igniters which are commonly used for lighting pipes, cigars and cigarettes, and more particularly to such lighters which consist of a rotatable wheel with a roughened periphery which by frictional contact with a piece of pyrophoric material produces sparks thus igniting a wick impregnated with petrol or other inflammable volatile medium adjacent thereto.
- 10 The present invention resides in an improved construction and adaptation of parts whereby a container for the petrol or the like, which can be conveniently carried in the pocket with the lighter, can be easily and quickly attached to the lighter to replenish the wick and at the same time when in that position enables the lighter to be used in the same manner as an ordinary candle. My invention
- 15 also comprises other features of construction which will be more apparent from the following description with reference to the accompanying drawing, in which:

Figure 1 is a view in elevation of my improved lighter with the plug closing the bottom of the wick chamber in position.

- 20 Figure 2 shews the plug separated from the wick chamber.

Fig. 3 is a view in elevation of the container.

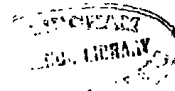
Figure 4 shews the container positioned on the bottom of the wick-case.

Figure 5 shews the plug attached to the cap of the container.

- 25 Similar letters of reference relate to like parts in all the figures of the drawing.

- Referring to the drawing and particularly to Figure 1 thereof, *a* represents the rotatable wheel, *b* the tube enclosing the pyrophoric material, *c* the cap covering the wick, and *d* the wick-case, all of a well known type and forming no part of the present improvements with the exception of the plug *e* also shewn
- 30 detached from the lighter in Figure 2. This plug *e* normally closes the bottom of the wick-chamber and is provided with the washer *f* and the screw-threaded shank *g* to fit into the threaded hole in the bottom of the case *d*. The base of the plug *e* is somewhat larger in diameter than the casing *d*, as shewn, so that the lighter will remain in an upright position when placed on a flat surface. *h*,
- 35 Figures 3 and 4, represents a container provided with the cap *i* screw-threaded interiorly to fit over the mouth *k*. When the plug *e* is removed the container *h* can be attached to the wick-case *d* the screw-thread on its mouth *k* being the

[Price 6d.]



same size as that of the threaded hole in the bottom of the wick-case and consequently the plug *e* can be screwed into the interior of the cap *i*.

Normally the device is used as shewn in Figure 1, but if it is desired to replenish the wick the plug *e* and the cap *i* are removed and the container *h* screwed into the bottom of the wick-case *d*, and the plug *e* and the cap *i* attached together, as shewn in Figure 5, may be placed in the pocket, for example, to avoid loss. The wick may be pulled down into the container *h*, as shewn in dotted lines in Figure 4, and in this manner the lighter can be used as an ordinary candle, the container *h* furnishing a substantial base, and the wick being in contact with the petrol or the like in the container will remain alight until all the petrol or volatile liquid therein is consumed. 5 10

Having now particularly described and ascertained the nature of my said invention and in what manner the same is to be performed, I declare that what I claim is:—

1. A pocket lighter or igniter of the kind described provided with a container for petrol or the like, the mouth of which can be readily screwed into the bottom of the wick-case when the plug is removed by which said wick-case is normally closed, said container when so attached to the lighter enabling the same to be used in the same manner as an ordinary candle, substantially as described. 15
2. A pocket lighter or igniter as claimed in the preceding claim in which the plug and the cap normally covering the mouth of the container can be screwed together when the container is in use, substantially as and for the purpose described. 20
3. A pocket lighter constructed and having its parts arranged and adapted to operate substantially as described and illustrated in the accompanying drawing. 25

Dated this 29th day of March, 1919.

H. J. ECK.

Per W. H. Beck & Co.,
Chartered Patent Agents,
115, Cannon Street, London, E.C. 4. 30

[This Drawing is a full-size reproduction of the Original.]

Fig. 1.

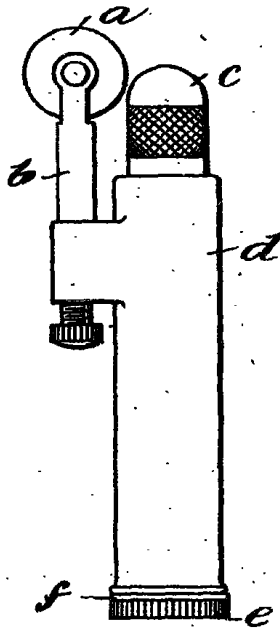


Fig. 3.

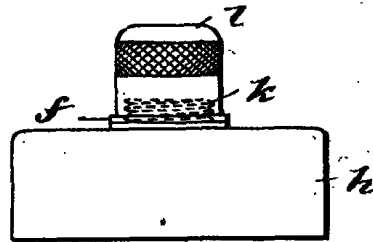


Fig. 2.



Fig. 4.

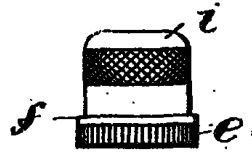
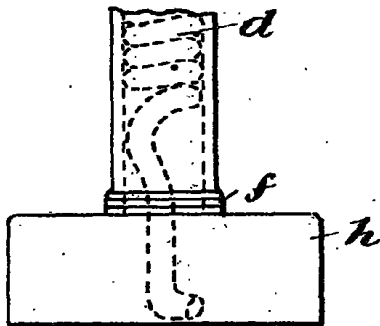


Fig. 5.